

Historic, Archive Document

Do not assume content reflects current scientific knowledge, policies, or practices.



62.57

❁ 1901 ❁

The Universal Horticultural Establishment



Novelties & specialties

NEW RARE AND BEAUTIFUL PLANTS SEEDS & BULBS

OFFERED RAISED OR INTRODUCED BY

W. A. MANDA

HORTICULTURAL EXPERT.

Winner of over Five Hundred Medals, Diplomas, and Money Prizes at all the leading Horticultural Exhibitions in America.

- Active Member of—** MASSACHUSETTS HORTICULTURAL SOCIETY, PENNSYLVANIA HORTICULTURAL SOCIETY,
 LENOX HORTICULTURAL SOCIETY, NEW JERSEY HORTICULTURAL SOCIETY,
 SOCIETY OF AMERICAN FLORISTS, NEW YORK FLORISTS' CLUB (*Ex-President*),
 PHILADELPHIA FLORISTS' CLUB,
- Honorary Member of—** MINNESOTA HORTICULTURAL SOCIETY, BOSTON GARDENERS' AND FLORISTS' CLUB,
 BERKSHIRE COUNTY GARDENERS' AND FLORISTS' CLUB.

*Formerly—Curator Botanical Gardens of Harvard University, Cambridge, Mass.
 Managing Partner PITCHER & MANDA*

NOW—PROPRIETOR OF THE
UNIVERSAL HORTICULTURAL ESTABLISHMENT,
 South Orange, N. J.

INTRODUCTION.

DEAR READERS: This Catalogue contains only my **Novelties** and **Specialties**, and such other plants as are of sterling merit. Intending buyers wishing my general catalogue, or **Pocket Garden Dictionary**, of everything pertaining to **Horticulture**, will receive same on application.

If there is anything you wish and do not see in this Catalogue, send for it, and you will receive same at the lowest market price in due season.

When sending your order, kindly state if I may substitute, if sold out of any variety wanted. In doing so you will greatly help me, and I will give you equally as good sorts, which will be sure to give satisfaction.

Please send in your orders early, writing your name and address plainly; also giving mode of shipment. I would recommend *express*; if by mail, add enough money to cover postage. Kindly induce your friends to send their orders with yours, and give me ample time to fill same carefully.

On my part, I will do everything in my power to please you, giving you the best quality of goods at the lowest living prices. I do not offer premiums or other nostrums, nor do I offer anything I have no faith in.

I **guarantee** the safe arrival of all goods sent by express, but cannot be held responsible for anything sent by mail or freight; nor can I be held responsible for money sent in unregistered letters, or for failure or shortage of crops, stock being exhausted when order is filled, or any accidents or delays in delivery beyond my control.

Correspondence is solicited from collectors or raisers of new varieties of plants, seeds, or bulbs, with the view of purchasing or exchanging same.

If at any time you are in need of a good gardener or assistant, write me, as I can recommend you reliable men whom I know personally.

I **am pleased at any time to receive visitors** who are interested in plants of any description, and, as I have the largest and most varied collection of choice and rare subjects, it will repay any one, even should he come a long distance, to inspect the plant. Here you will see plants from all parts of the globe, and, among others, the unique and celebrated **George Washington Palm**, which was owned by the first **President of the United States**, and is the admiration of every visitor.

The Nurseries are situated on the Delaware, Lackawanna & Western Railroad, adjoining the depot of South Orange. There are eighty-three trains daily, so visitors will only have a few minutes to wait, trains being so frequent. There are also electric cars from Newark to South Orange, connecting with the Pennsylvania Railroad and Jersey Central Railroad every ten minutes. Taking it all in all, it is the most accessible Nursery in the country.

Trusting to hear from you and your friends who are interested in gardening, and assuring you of my best efforts to give satisfaction,

Yours respectfully,



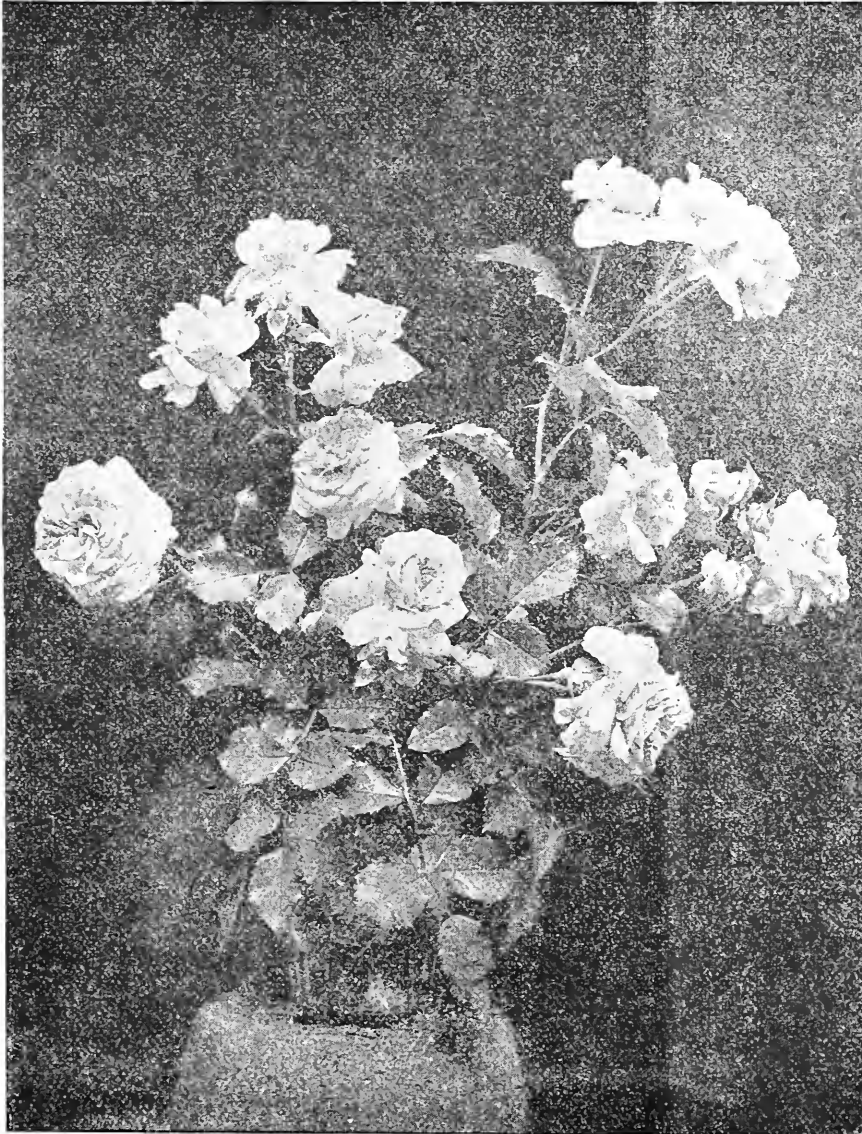
In the future, this and other Catalogues will be sent to customers only, or those applying for same.

NOVELTIES FOR 1901.

NEW HYBRID WICHURAIANA ROSES.

“PINK PEARL” (*Manda*).

(*Meteor* x *Wichuraiana*.)



One of the most remarkable Roses in cultivation. This Rose created a sensation last spring, when exhibited in Eden Musée at a show held by the American Rose Society, not only from professional men, but also from the general public and daily press, and was considered the gem of the show. It is a remarkable grower, with enormous, long shoots, well covered with large, leathery, thick, shiny foliage, which keeps mostly all through the winter. The flowers are produced from the ripened growths, with stems nine to twelve inches long, either singly or three to five in bunches. The bud is a beautiful rich crimson color, and when open the flower is perfectly double, of a beautiful pearl pink color, with a bright yellow protruding stigma standing up like a crown. The flowers are deliciously fragrant, and last a long time in perfection. This is considered the best of all the Hybrid Wichuraiana Roses, and a rose that will be grand either as a garden rose for trailing or training purposes, or for cut flowers.

This Rose has received first-class certificates from the American Rose Society, and numerous other awards at different exhibitions.

See illustration on this page; also read the numerous comments in horticultural papers and public press, too numerous to mention.

Plants will be ready in April.

PRICES.

Young plants, two-inch pots	each, \$0.75	Per dozen.....	\$7.50
One-year-old plants.....	“ 2.50	“	25.00
A few two-year-old plants.....	“ 5.00		

Manda's Hybrid Wichuraiana Roses.—Continued.

CRIMSON ROAMER (*Manda*).

(*Bardou Job* x *Jersey Beauty*.)

Exhibited and certified by the American Rose Society, under "Improved Pink Roamer." This is a wonderful rose that will displace the Pink Roamer, as it has better habits, closer and thicker foliage of leathery, shiny substance, while the flowers, with which the plant is entirely covered, are of the richest crimson red imaginable, with bright yellow stamens. It is a grand rose for landscape purposes. Plants ready in April.

Young plants, two-inch pots50 cents each ; \$5.00 per dozen.
A few one-year-old plants.....\$1.75 each ; \$17.50 per dozen.

WHITE STAR (*Manda*).

(*Jersey Beauty* x *Manda's Triumph*.)

Beautiful free-growing variety, with fine bronzy foliage. Single white flowers, with yellow stamens. This will be found a valuable rose for landscape purposes.

Young plants.....50 cents each ; \$5.00 per dozen.
One-year-old plants.....\$1.75 each ; \$17.50 per dozen.

IMPROVED UNIVERSAL FAVORITE (*Manda*).

A distinct sport of this well-known variety sent out by me several years ago, with longer growths and the flower larger, more double, and better form; much brighter in color. Beautiful addition to this grand class of Roses. Plants ready in April.

Young plants, two-inch pots.....50 cents each ; \$5.00 per dozen.
One-year-old plants.....\$1.75 each ; \$17.50 per dozen.
One of each of the four varieties, two-inch pots.....\$2.00.
Twelve of each of the four varieties, two-inch pots.....\$18.00.
One of each, one-year-old plants, four varieties.....\$7.00.

QUEEN OF EDGELY (*Floral Exchange*).

Bright Pink.....\$9.00 per dozen ; \$40.00 per hundred.

ROBERT SCOTT.

Rosy Pink.....\$6.00 per dozen ; \$30.00 per hundred.

New Carnations.

Prices below are for rooted cuttings. Fine plants from 2 1/2-inch pots, 25 per cent. higher.

	Per Doz.	Per 100.
Prosperity (<i>Dailedouze</i>). White shaded pink	\$5.00	\$16.00
Governor Roosevelt (<i>Ward</i>). Fine crimson..	2.50	12.00
Golden Beauty (<i>Ward</i>). Yellow.....	2.50	12.00
Novelty (<i>Ward</i>). Fancy yellow..	2.50	12.00
Lorna (<i>Dorner</i>). White.....	2.00	10.00
Mermaid (<i>Dorner</i>). Delicate pink.....	1.50	6.00
Dorothy (<i>Graves</i>). Pink.....	2.00	10.00

	Per Doz.	Per 100.
California Gold (<i>Sievers</i>). Yellow.....	\$2.00	\$10.00
Norway (<i>Weber</i>). White.....	2.00	10.00
Queen Louise (<i>Dillon</i>). White.....	2.00	10.00
Irene (<i>C. and H.</i>). Pink.....	2.00	10.00
Bon Homme Richard (<i>C. C. Co.</i>). White blush	2.00	10.00
Nydia (<i>C. C. Co.</i>). Variegated white.....	2.00	10.00
Prolifica (<i>C. C. Co.</i>). Cerise pink.....	2.00	10.00
Sunbeam (<i>C. C. Co.</i>). Light pink.....	2.00	10.00

New Chrysanthemums.

	Each.	Per Doz.		Each.	Per Doz.
Brutus (J. N. May). Bright red, shaded orange.....	\$0.50	\$5.00	Lady Roberts (E. G. Hill). White.	\$0.50	\$5.00
Chestnut Hill (J. N. May). Fine yellow... .50	.50	5.00	Lord Cromer (E. G. Hill). Rich crimson.. .25	.25	2.50
Mrs. W. B. Chamberlain (J. N. May). Pink .50	.50	5.00	Iolantha (N. Smith & Son). Pink, incurved .50	.50	5.00
Yanariva (J. N. May). Blush..... .50	.50	5.00	Omega (N. Smith & Son). Yellow..... .50	.50	5.00
Zampa (J. N. May). Old gold..... .50	.50	5.00	Mrs. E. D. Smith (N. Smith & Son). Bright yellow..... .50	.50	5.00
Timothy Eaton (Miller & Sons). Creamy white50	.50	5.00	Princess Bassaraba . Pure white35	.35	4.00
Malcolm Lamond (E. G. Hill). Fine red... .35	.35	4.00	Mrs. Grogan . Bright pink..... .25	.25	2.50
Mary Hill (E. G. Hill). Bright pink..... .35	.35	4.00	White Quintus . White25	.25	2.50
Golden Beauty (E. G. Hill). Golden yellow .35	.35	4.00	Mrs. Ritson50	.50	5.00

New Pompon Chrysanthemums.

Strong plants, 2 1/2 inch pots. 25 cents each; \$2.25 per dozen.

Prosperity (W. A. Manda). Finest white ever introduced.	Miss Ada Williams (J. N. May). White shaded blush.
Lula (J. N. May). White, globular form.	Klondike (J. N. May). Brilliant yellow.
Gallia (J. N. May). Clear, soft pink.	Aileen (J. N. May). Deep lilac pink.
Quinola (J. N. May). Deep orange yellow.	

Begonias.

NEW BEGONIA REX, "BLACK DIAMOND" (Manda).

One of the most distinct Begonias in cultivation, with short compact growth, with closely set leaves, making a beautiful, compact plant. The leaves are five to nine inches in diameter, of a beautiful rich metallic blue color, with a wonderful gloss which is very conspicuous, especially by artificial light. This is one of the most beautiful Begonia Rex in cultivation, either as specimen plants or small sizes for filling fern dishes or boxes.

Price.....75 cents each; \$7.50 per dozen.

NEW BEGONIA REX, "SILVER CLOUD" (Manda).

A remarkably distinct Begonia, very compact and dwarf. The stems are short, light green, supporting a large leaf six to nine inches across. Toward the centre of the leaf is rich dark brown, while the centre is a beautiful satiny silver. The edges are green, spotted with white. The whole leaf has a beautiful lustre.

New Hardy Plants.

HELIANTHUS TUBEROSUS VARIEGATUS (Manda).

This is a most extraordinary plant, a sport from the well-known Helianthus Tuberosus, very hardy and vigorous, especially in the early season, beautifully variegated with white, giving the plant a rich tropical effect, which is enhanced in the Fall, when the plant is covered with a multitude of bright yellow flowers. This is a plant that should be extensively used for herbaceous and subtropical borders. Price, 25 cents each; \$2.50 per dozen.

MONARDA HYBRIDA LILACINA (Manda).

A distinct seedling of this well-known plant, producing the usual profusion of deep lilac fragrant flowers from June to September.

New Hardy Plants.—Continued.

MONARDA HYBRIDA LILACINA PALLIDA (*Manda*).

A beautiful pale form of the above, with light mauve flowers.

MONARDA HYBRIDA CARMINEA (*Manda*).

A beautiful distinct hybrid, with rich crimson flowers produced in great abundance, forming a beautiful addition to the above, as well as to the well-known *Monarda Didyma*, which is in general cultivation.

Plants of the three varieties.....35 cents each ; \$3.50 per dozen.

A set of the three varieties.....90 cents.

1901. NOVELTIES IN SEEDS. 1901.

AQUILEGIA CHRYSANTHA FLORE PLENA.

A beautiful double form of this fine hardy plant. 25 cents per packet.

ANTHIRRINUM, LARGE FLOWERED.

I take pleasure in offering eight separate varieties of this beautiful plant, so useful for cut-flower purposes. 15 cents per packet ; 8 varieties for \$1.00.

GAILLARDIA GRANDIFLORA, GOLDEN-LEAVED.

This beautiful variety has a leaf with golden-yellow marblings and blotchings which add so much to the effect of the flower. 25 cents per packet.

NEW GIANT FANCY DIANTHUS.

A grand strain of summer-flowering *Dianthus*, with flower two to three inches in diameter, beautifully fringed, and having a remarkable range of coloring. 15 cents per packet.

NEW LARGE-FLOWERING EARLY COSMOS.

Beautiful type, producing flowers very early, which is a decided advantage. 15 cents per packet.

NEW GIANT COSMOS.

I have a beautiful strain of these with flowers four inches across, in three shades, *pink, red, and white*. Each, per packet, 10 cents, or three varieties, one of each, for 25 cents.

HYBRID ORIENTAL POPPIES.

This grand garden plant has so improved that we have any color, from almost pure white to the dazzling scarlet. Price per packet, 25 cents.

PYRETHRUM ROSEUM HYBRIDUM GRANDIFLORA.

This favorite hardy plant produces flowers from three to four inches in diameter, varying in all colors from pure white to deep carmine. 25 cents per packet.

NICOTIANA SYLVESTRIS.

Fine summer-flowering plant, with large pure white sweet-scented flowers. 10 cents per packet.

PETUNIA HYBRIDA SNOWBALL.

Very white dwarf variety. Grand for bedding. 15 cents per packet.

ROSA WICHURAIANA HYBRIDS.

These fine hybrids have been raised on my own grounds, and contain crosses and varieties that will be sure to produce some extraordinary new kinds. 35 cents per packet ; four packets for \$1.00.

1900 NOVELTIES AND SPECIALTIES.

ASPARAGUS DECUMBENS.

This is a most beautiful and graceful plant for hanging purposes. The growth is from two to four feet in length, wavy, and of rich green color. I have only a few extra large plants to offer at **\$1.00 each ; \$10.00 per doz.**

ANTHURIUM AMABILE (*Manda*).

This is a hybrid between *A. crystallinum* and *A. magnificum*, with same beautiful foliage as parents. The new leaves are especially attractive on account of the soft rose color. Strong plants. **\$2.50 and \$3.50 each.**

ABUTILON SAWITZII.

This grand novelty was sent out last year, and it has proved such a grand plant, either as a greenhouse plant or in subtropical borders, or as a bedding plant, that I again recommend same on account of its dwarf and compact habit and its beautiful white and green foliage. Try a bed of this plant. **15 cents each ; \$1.50 per dozen ; \$10.00 per 100.**

NEW HYBRID BEGONIA REX.

This is a collection of hybrid seedling Begonia Rex of special beauty and merit, which should be in every collection of plants.

Frank Nelson.—Very large round leaf, dark green ground, veined and spotted with silvery white. Very showy exhibition variety.

Harlequin.—Rich bronzy ground, irregularly striped, spotted, and splashed with white. A striking variety.

Olympia.—Leaf medium size, upper section bronzy, edge rich green, middle silvery white. **15 cents each ; the set of three varieties, 35 cents.**

BEGONIA HAAGEANA.

This plant, while in cultivation some time, has never been brought before the public in its true merit. It is a plant of the easiest culture, growing one to two feet high, and producing enormously large trusses of light pink waxy large flowers. One of the finest of flowering plants for house or greenhouse. **15 cents each ; per dozen, \$1.50.**

BEGONIA DUCHARTERII.

No doubt this is the finest of the large flowering Begonias. The plant grows one to two feet high. The foliage is dark green, while the large trusses are composed of large pure white waxy flowers. The plant is very floriferous, and deserves to be in every collection of flowering plants. **35 cents each ; per dozen, \$3.50.**

BEGONIA GLOIRE DE LORRAINE.

A most useful free flowering plant in cultivation. Dwarf and compact in growth, this plant is literally covered with its large bright pink flowers. No collection should be without this plant. **50 cents each ; per dozen, \$5.00.**

LAELIA ELEGANS VARIETIES.

Of this beautiful natural hybrid I have the finest collection in the country, consisting of over thirty varieties of extraordinary merit, particulars of which I would be pleased to give on application.

SELAGINELLA COGNATA.

An upright growing species, with large glossy green growth of one to two feet in height. **50 cents each.**

NEW HARDY CANDYTUFT.

(*Iberis sempervirens superba*.)

Indeed a grand improvement on the grand old Hardy Garden Plant. The plant is of dwarfer habit, foliage thicker, much broader than the type, the umbels of flowers are larger than the type, each individual flower double the size of the ordinary form, and pure white. A grand improvement on the old type. A plant for every one. Strong plants. **25 cents each ; per dozen, \$2.50.**

NEW PERPETUAL FLOWERING HARDY PHLOX, "TOM THUMB."

This is the dwarfest of all the Paniculata section, growing only ten to fifteen inches high, and producing large heads of pure white flowers in profusion from June until frost, and on that account not only the best Phlox in cultivation, but one of the most desirable Hardy Perennials in existence. Strong plants, **15 cents each ; per dozen, \$1.50.**

IRIS AUREA (*The Golden Fleur de Lis*).

This is one of the finest of this beautiful class of plants, and the best of Hardy Perennials. It grows to a height of four to five feet, bearing twelve to fifteen pure golden yellow flowers of large size, a color which is rare in Iris. A grand plant that should be in every garden. Strong plants. **15 cents each ; per dozen, \$1.50.**

IRIS OCHROLEUCA.

A grand Iris, with long leathery foliage, and flowers of the purest white, with yellow blotch on the lip. Flowers very freely in the early summer. A rare plant, rare in gardens as yet, and one that should be in every collection of hardy plants. **25 cents each ; per dozen, \$2.50.**

NEW HARDY UPRIGHT EVERGREEN EUONYMUS.

Euonymus radicans arborescens (Manda).

This is one of the most useful additions to our hardy Evergreen Shrubs. Every one is acquainted with *Euonymus Radicans*, of which this grand novelty is a selected sport of strong upright growth, growing three to five feet high, and forming a shrub that is a most

welcome addition to our limited list of hardy shrubs with evergreen foliage. The foliage is larger than the type, and much rounder in its outlines. An additional merit of the plant is the bright red fruits produced in the autumn, which add beauty to this fine new shrub. Two-inch pots, 25 cents each; per dozen, \$2.50; per 100, \$18.00. Extra strong field grown three-year-old plants, \$1.00 each; per dozen, \$10.00.

LIGUSTRUM OVALIFOLIUM VARIEGATUM.

This is a bright variegated form of the well-known *Californian Privet*. The habit of plant and foliage

are the same, except that the leaves are beautifully variegated with yellow and white, which adds to this plant great beauty, while the same use could be made as the popular type of the Californian Privet. Trial will convince you. Strong plants. 35 cents each; per dozen, \$3.50.

HEMEROCALLIS AURANTIACA MAJOR.

This is one of the finest hardy plants in cultivation, producing in the spring spikes with very large orange yellow flowers handsomer than any Lily; of the easiest culture, and a grand addition to this popular class of plants. 50 cents each; per dozen, \$5.00.

Bulbs for Spring Planting.

TUBEROUS ROOTED BEGONIAS.

A very desirable plant, which can be used for outdoor bedding if planted in a sheltered position, away from the direct rays of the sun; also as a pot or box plant.

	Doz.	100.
Begonias, Tuberous-Rooted. Double.....	\$2.50	\$18.00
Begonias, Tuberous-Rooted. Single, mixed..	1.20	8.00

GLADIOLUS.

	Doz.	100.
Gladiolus. All colors mixed.....	\$0.30	\$2.00
Gladiolus. American Hybrids.....	.50	3.00
Gladiolus. Yellow varieties mixed.....	.50	3.00
Gladiolus. Lemoine's Finest, mixed.....	.75	5.50
Gladiolus. White and Light mixed.....	.50	3.00
Gladiolus. Pink varieties mixed.....	.50	3.00

LILIES.

The following are only a very few of the collection I carry, having at least a hundred varieties in stock of these well-known favorites.

	Each.	Doz.
Lilium auratum (<i>The Golden Banded Lily</i>)..	\$0.20	\$2.00
Lilium speciosum.....	.20	2.00
Lilium speciosum album.....	.25	2.50
Lilium speciosum roseum.....	.20	2.00
Lilium tigrinum splendens. Fine red flowers..	.20	2.00
Caladium esculentum (<i>Elephant's Ear</i>).....	.25	2.50
Dahlia. The very best varieties.....	.15	1.50
Gloxinia, mixed. Finest strains.....	.25	2.50
Hyacinthus candicans. White flowers.....	.08	.75
Madeira Vine (<i>Climbing Mignonette</i>).....	.05	.50
Tigridia in varieties (<i>Mexican Shell Flower</i>)	.05	.50
Tuberose, Dwarf Pearl. Double white.....	.10	.75

For other varieties, see my *Pocket Garden Dictionary*, pages 56 to 58.

Cannas.

25 cents each; \$2.00 per dozen; \$16.00 per 100.

Mme. Crozy. Scarlet, golden edge.
Alphonse Bouvier. Brilliant crimson.
President McKinley. Brilliant crimson.
Queen Charlotte. Scarlet, yellow border.
Florence Vaughan. Yellow, spotted scarlet.
Souv. de Mme. Crozy. Scarlet, bordered yellow.
Chicago. Orange scarlet.
Alsace. The only white canna.
Italia. Yellow margin, centre reddish brown.
Lorraine. Rosy pink.

Burbank. Rich canary yellow.
Austria. Bright golden yellow.
Mlle. Berat. Dark carmine pink.
Depute Ravarin. Bright crimson.
Defender. Yellow, striped with scarlet.
W. G. Eisele. Orange-salmon.
Rose Unique. Pinkish salmon.
Golden Bedder. Bright golden yellow.
Comte de Bouchard. Larger than *Florence Vaughan*.
President Carnot. Carmine flowers.
Roi des Rouges. Exceedingly brilliant red.

Egandale. Bright cherry.
F. Neuvesel. Flowers orange scarlet
J. C. Vaughan. Large vermilion-orange.
J. D. Cabos. Bright orange, or apricot.
Kronos. Lemon yellow spotted.
Secretaire Chabanne. Deep orange.
President Cleveland. Bright orange scarlet.
Beaute de Poitevine. Crimson-scarlet.
Philadelphia. Crimson, rich, velvety.
Duke of Marlborough. Dark crimson.
J. T. Lovett. Bright cherry.



SPRAY OF NEW ROSE EVERGREEN GEM.

My Specialties.

New

Hardy Evergreen Hybrid Wichuraiana Roses.

This remarkable class of plants are too well known to need much description at this late date. I have a very fine stock of the following sets, and can fill all orders immediately:

Gardenia (Manda).

(*Wichuraiana X Perle des Jardins*).

Strong grower, with large foliage. Flowers singly. Very fragrant, resembling Perle when in bud, while, when fully opened, can hardly be distinguished from the Gardenia. See illustration on back of cover.

Jersey Beauty (Manda).

(*Wichuraiana X Perle des Jardins*).

Vigorous grower. Foliage thick and leathery. Flowers singly or in clusters. Large, single, three inches in diameter. Opening yellow and turning to white, with bright yellow stamens. See illustration on back of cover.

Evergreen Gem (Manda).

(*Wichuraiana X Madame Hoste*).

Wonderfully quick grower, growing close to the ground, with fine, bronzy foliage, with yellow flowers of remarkable fragrance. See plate opposite.

These three varieties are valuable for almost any purpose.

Young plants, 2-inch, 15c. each;
\$1.50 per doz.; \$12.00 per 100.

One-year-old plants, 35c. each;
\$3.50 per doz.; \$25.00 per 100.

Large two-year-old plants, 75c.
each; \$7.50 per doz.

Extra large three-year-old plants,
\$1.00 each; \$10.00 per doz.

Roses.

Bedding or Greenhouse Roses.

	Doz.	10c.
American Beauty. Fine pink.....	\$2.00	\$14.00
Bride. White.....	1.50	12.00
Bridesmaid. Beautiful clear pink.....	1.50	12.00
Kaiserin Augusta Victoria. Fine white.....	1.50	12.00
La France. Shell pink.....	1.50	12.00
Liberty. Crimson.....	3.00	18.00
Madame Hoste. White, shaded yellow.....	1.50	12.00
Meteor. Dark velvety crimson.....	1.50	12.00
Perle des Jardins. The finest yellow.....	1.50	12.00

Hybrid Perpetual Roses.

STRONG TWO-YEAR-OLD.

	Each.	Doz.
Alfred Colomb. Carmine-crimson.....	\$0.50	\$5.00
Anne de Diesbach. Beautiful carmine.....	.50	5.00
Baroness Rothschild. Light pink.....	.50	5.00
General Jacqueminot. Brilliant crimson.....	.50	5.00
General Washington. Bright red.....	.50	5.00
John Hopper. Bright rose, carmine centre .	.50	5.00
Marshall P. Wilder. Cherry-rose color.....	.50	5.00
Mabel Morrison. White, tinged with pink..	.50	5.00
Madame Gabriel Luizet. Pink.....	.50	5.00
Madame Victor Verdier. Carmine-crimson...	.50	5.00

Hybrid Perpetual Roses.—Continued.

	Each.	Doz.
Mrs. Jno. Laing. Soft pink.....	\$0.50	\$5.00
Paul Neyron. Deep rose.....	.50	5.00
Prince Camille de Rohan. Dark crimson....	.50	5.00
Ulrich Brunner. Brilliant cherry-red.....	.50	5.00
Victor Verdier. Bright rose, carmine centre	.50	5.00

Various Roses.

	Each.
Baltimore Belle. Pillar rose, nearly white.....	\$0.35
Captain Christy. Deep flesh color.....	.50
Clothilde Soupert. White, tinted with pink.....	.35
Coquette des Blancches. A beautiful white variety..	.50
Coquette des Alps. White, tinged with pink.....	.50
Crested Moss. Deep pink-colored buds.....	.50
Crimson Rambler. Red, produced in bunches.....	.35
Hermosa. Bright rose color.....	.35
Mad. Plantier. Pure white; very floriferous.....	.35
Magna Charta. Color pink suffused with carmine..	.50
Persian Yellow. Golden yellow flowers.....	.50
Queen of the Prairies. Striped bright red.....	.35
Rugosa alba. Pure white single flower.....	.50
Rugosa rubra. A glossy crimson form of the above	.50
Wichuraiana. Trailing variety, white flowers.....	.35

ANY OTHER ROSES, PRICES ON APPLICATION.

Manda's Hybrid Wichuraiana Roses.

These new roses have proved everything that has been claimed for them, and will be in greater demand than ever, especially large plants for forcing purposes, for which they are well adapted. I have to offer the following sizes, and can strongly recommend the large field-grown plants:

MANDA'S TRIUMPH (*Manda*).

This grand rose is of free growth, luxuriant foliage, and produces large clusters of double pure white flowers, two inches in diameter, beautifully imbricated and well formed, very sweet scented. Grand Easter plant.

UNIVERSAL FAVORITE (*Manda*).

This is the most vigorous plant of the set. The long branching shoots are covered with dense bright green foliage. The double flowers are over two inches in diameter, and of a beautiful rose color, similar to the *Bridesmaid*, and deliciously fragrant. A grand variety for any purpose. Grand Easter plant.

SOUTH ORANGE PERFECTION (*Manda*).

This a gem, growing freely close to the ground, and having multitudes of the most perfectly formed double flowers, about one and a half inches in diameter, soft blush pink at the tips, changing to white. It lasts a long time in perfection.

PINK ROAMER (*Manda*).

This is without question a hybrid between the *Sweetbrier*, and carries these characteristics in bloom, while the growth, which is very rampant, and the luxurious foliage, partake more of the *Wichuraiana*. The single flowers,

CABLE ADDRESS:
MANDA, SOUTH ORANGE.
A.B.C. CODE USED.

TELEPHONE, 2149 ORANGE.



MERCHANT, GROWER,
Importer & Exporter in
FLOWER & VEGETABLE
SEEDS,
GREENHOUSE & HARDY
PLANTS,
TREES, SHRUBS & VINES,
HORTICULTURAL
REQUISITES.

LANDSCAPE ARCHITECT,
HORTICULTURAL BUILDER,
ADVISOR, VALUER AND
GENERAL HORTICULTURAL
EXPERT.
NEW PLACES LAID OUT
AND OLD IMPROVED.
CARE TAKEN OF GARDENS
AND GREENHOUSES.

Novelties a specialty

Proprietor.

South Orange, N.J., U.S.A.

NOVELTIES AND SPECIALTIES

OFFERED BY

W. A. MANDA, South Orange, N. J.

Please send me in return your list of Novelties.

GOLDEN LEAF SALVIA, SEEDS offered for the first time, comes true from Seed, Retail 25c. per pkt., trade 15c.

HYBRID WICHURAIANA ROSES, Manda's Triumph, Pink Roamer, Universal Favorite, South Orange Perfection, best new Roses on the market, price, two inch pots, retail 25c., wholesale 12c., one year old strong, retail 75c., wholesale 35c., two year old, stock limited, retail \$2.75 each, wholesale \$1.75.

Canna, Manda's Ideal, best bedder, scarlet,	retail 25c.	wholesale 14c.
Canna, Robert Christy, best orange extra,	" 25c.	" 14c.
Canna, John White, variegated foliage,	" 15c.	" 6c.
Canna, Burbank, fine yellow,	" 25c.	" 14c.
Canna, Italia, fine yellow,	" 25c.	" 6c.
Canna, Austria, fine yellow	" 25c.	" 8c.
Canna Seeds, Manda's New Hybrids, pkt.	" 25c.	" 15c.
<hr/>		
New Yellow Calla Elliottiana, TRUE,	" \$4.75	" \$3.50.
New Yellow Calla Pentlandii, TRUE,	" \$4.75	" \$3.50.

New Dwarf Phlox Thom Thumb of the paniculata section, grows only 6 to 9 inches high, very floriferous, pure white, fine, retail 25c., wholesale 12c.

FROM THESE PRICES 20 PER CENT FOR CATALOGUING.

Special description and information given on application.



which are produced in close heads, are nearly two inches in diameter, bright rich pink, with almost a white centre, which lightens up the orange-red stamens, producing an effect which, combined with fragrance, makes it one of the most valuable roses in cultivation.

Taking them together, the set of the above four varieties should be in every garden, and I am sure they will prove more valuable than the celebrated *Crimson Rambler*, as they are of a much more vigorous growth. Some shoots made last season were from fifteen to twenty feet in length, which is marvelous amongst roses.

Two-inch plants.....	10 cents each ; per dozen, \$1.00 ; per 100, \$8.00
Extra strong one-year-old plants.....	25 " " 2.50 ; " 16.00
Extra strong two-year-old field grown plants.....	45 " " 4.50 ; " 35.00
Extra strong three-year-old field grown plants.....	75 " " 7.50 ; " 55.00

Be sure to order my **New Evergreen Roses**. See their description and photo-engravings.

NEW EXTRAORDINARY BEDDING PLANT.

Double Begonia Vernon.

Without any question the finest bedding plant that has ever been introduced, and one that is going to be used by the thousand in every garden. Every one is acquainted with the merit of *Begonia Vernon*, of which this grand novelty has the same characteristics, with the additional merit of having the flower *double*, keeping much longer in perfection, and being produced in great profusion. I have given this plant extensive trial, and can recommend it as the finest bedding plant ever introduced. **15 cents each ; per dozen, \$1.50 ; per 100, \$10.00.**

NEW GOLDEN LEAF SALVIA, "TOM THUMB."

Among the many seedlings raised by me I have selected this as the most beautiful and striking. It makes a plant ten to twelve inches high, very tufted and closely grown, forming a mass of golden yellow foliage without producing any flowers, and on that account it will be used same as a *Yellow Coleus*, but with more satisfactory growth. **Two-inch, 15 cents each ; per dozen, \$1.50 ; per 100, \$10.00.**

Carnations—Standard Sorts.

Price for rooted cuttings, \$1.00 per doz. ; \$8.00 per 100. Fine plants from 2½-inch pots, 25 per cent higher.

- America. Red.
- Ethel Crocker. Peach pink.
- Estelle. Fine scarlet.
- Flora Hill. Free white.
- G. H. Crane. Brilliant scarlet.
- Gen. Gomez. Cardinal red.
- Gen. Maceo. Scarlet maroon.

- Glacier. Pure white.
- Genevieve Lord. Light pink.
- Mrs. Bertram Lippincott. Fine pink.
- Mrs. T. H. Lawson. Pink.
- Mrs. Bradt. White striped scarlet.
- The Marquis. Bright pink.
- White Cloud. White.

Best Twenty-five

Chrysanthemums.

Standard Varieties.

15 cents each ; \$1.50 per doz. ; \$12.00 per 100.

- Black Hawk. Dark velvety crimson.
- Casco. Pure garnet.
- Col. Appleton. Incurved yellow.
- Goldmine. Rich golden yellow.
- Glory of the Pacific. Best early pink.
- Harry A. Parr. Lemon yellow.
- Helen Bloodgood. Bright pink.
- Intensity. Bright crimson.
- Ivory. Fine white.
- Lady Fitzwygram. Earliest white.
- Mrs. H. Robinson. Fine white.
- Mrs. O. P. Bassett. Rich yellow.
- Mrs. Jerome Jones. Waxy white.

- Mrs. Trenor L. Park. Golden yellow.
- Modesto. Bright yellow.
- Madame F. Bergman. Early white.
- Major Bonnaffon. Yellow.
- Mayflower. Creamy white.
- Merza. White Japanese.
- Myanza. Red and gold.
- Polly Rose. White.
- Queen. Satiny white.
- Quito. Deep rose pink.
- V. Morel. Fine satiny pink.
- W. H. Chadwick. White shaded pink.

Pompon Chrysanthemums.—Beautiful for borders or landscape effect. I have twenty-five varieties. **15 cents each ; \$1.50 per doz. ; \$2.50 for the twenty-five varieties.**

Plants in General.

My collection comprises a complete collection of Flowering Plants, the list and prices of which will be found in my Pocket Garden Dictionary on pages 60 to 62.

ORCHIDS.

Over twenty thousand plants are cultivated by me in all the well-known varieties, in prices from \$1.00 and upward. The full collection is described in my Pocket Garden Dictionary on pages 45 to 50.

PALMS AND FERNS.

Several houses are filled with these Ornamental Plants, averaging in size from 2-inch pot to the large

specimens twenty feet in height. Prices and sizes given on application. List found in my Pocket Garden Dictionary on pages 40 to 43.

FANCY FOLIAGE PLANTS.

An enormous variety of these are found in my greenhouses, and for list consult my Pocket Garden Dictionary, pages 37 to 40.

HARDY PERENNIALS.

Acres are devoted to these old-fashioned flowers. For full list consult my Pocket Garden Dictionary, pages 53 to 57.

Ornamental Trees and Shrubs.

Of these I have the most complete collection, especially choice Conifers in large sizes, also Rhododendrons, Boxwood and all plants most useful for landscape effects. Read my Pocket Garden Dictionary, pages 57 to 67.

FRUIT TREES, SHRUBS AND VINES

Are also included in my extensive place, and a list of same will be found in my Pocket Garden Dictionary, pages 69 to 71.

WATER AND BOG PLANTS.

My collection comprises the very best of these beautiful plants. For list, see my Pocket Garden Dictionary, pages 58 and 59.

BEDDING AND GARDEN PLANTS.

Fine stock in great variety always on hand for collection. See Pocket Garden Dictionary, pages 59 and 60.

HORTICULTURAL IMPLEMENTS AND GARDEN REQUISITES.

Can furnish anything in this line, at lowest market prices. For list, see Pocket Garden Dictionary, pages 100 to 102.

HORTICULTURAL BOOKS AND PERIODICALS.

Can furnish these at publishers' prices. For full list see Pocket Garden Dictionary, pages 102 and 103.


Seeds.

Flower, Vegetable, Grass and Clover, also Tree and Palm Seeds in complete assortment. See my Seed List or General Catalogue.

and

Everything Pertaining to Horticulture.

SPECIAL NOTICE.

 WING to the large demand for plants that are green summer and winter, for landscape effect, I have made it a special study, and increased my collection so that now I can offer these plants by the thousands or hundreds of thousands especially.

BOXWOOD in sizes for edging, up to specimens six feet high.

RHODODENDRON MAXIMUM in fine, large specimens, three to eight feet in height, for background of masses or single specimens.

RHODODENDRON CATAWBIENSE HYBRIDS. Only the dark, rich varieties which will form a contrast to the light colors of the "Maximum." Thousands of plants from two to four feet high. I have also extra large specimens.

ANDROMEDAS in all the leading varieties, in various sizes.

CONIFERS.—Of these most beautiful plants I have over three hundred varieties, varying from one foot high to specimens fifteen to eighteen feet in height, and including all the choicest and best varieties.

Besides these, I have all the Shrubs and Plants with Evergreen Foliage, such as "Pachysandra," "Berberis," "Euonymus," "Mahonia," and others. If you want to produce the proper effect on your place, you cannot do so without these plants.

Come and see the stock before planting time, or write for quotation by the plant, hundreds, thousands, or carloads of any of the above.

Landscape Gardening.

THIS is a very important subject, and one that should not be neglected or overlooked, especially when building up a new place. It means that with a **good plan** you can lay out your place to all the advantages it commands naturally, besides making and developing features where the location is disadvantageous. The **roads** and **walks** should be laid out not only to be practical, but also to be in harmony with everything adjacent.

The Proper Location of Trees and Shrubs,

with the selection of the best and most desirable kinds, is very important, for you are planting for the future, and, as it takes years for a shrub or tree to grow, you should plant only such as would be desirable and valuable when grown up. The same applies to the location of vegetable, flower, fruit, rock, or wild garden borders or flower beds.

The Grouping or Massing of either Trees, Shrubs, Plants, or Bulbs,

to produce certain effects at special seasons, either in foliage, flower or fruit, can only be successfully accomplished by having full knowledge of the habits and character of such plants.

Many unsightly corners and spaces could be not only hidden, but actually made beautiful. Thus, outside the general flower garden, barren rocks and stumps of trees can be covered with luxuriant growth.

Dry and Sandy Hills, where even grass refuses to grow,

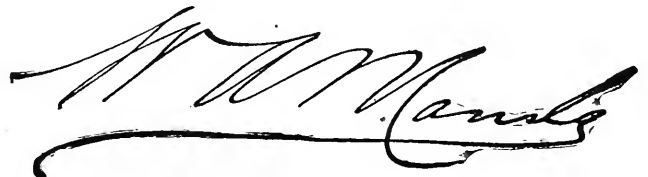
with proper selection, can be made as beautiful as where the soil is rich, while marshes can be turned into handsome objects, and ponds covered with showy water plants. In one word, it is the knowledge of the habits of plants and their adaptability to certain locations that brings the desired success.

Locating and **designing** greenhouses, graperies, pits or frames on a place are also very important; so are the proper details in the construction of greenhouses, which are generally left to architects, who do not take into consideration the practical points of the greenhouse or conservatory.

Do not lay out your place without a Landscape Gardener

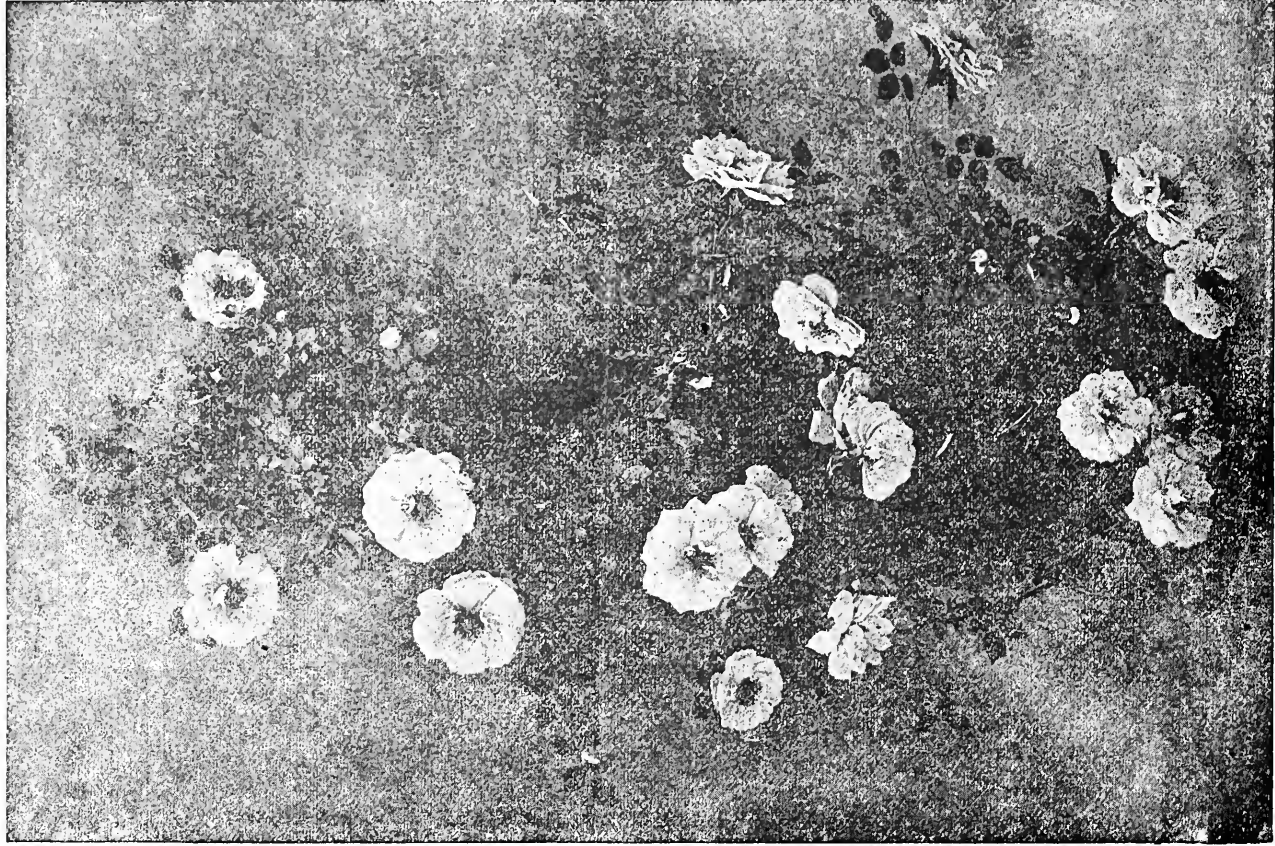
any more than you would build a house without an architect; and you cannot do better than consult

Yours truly,

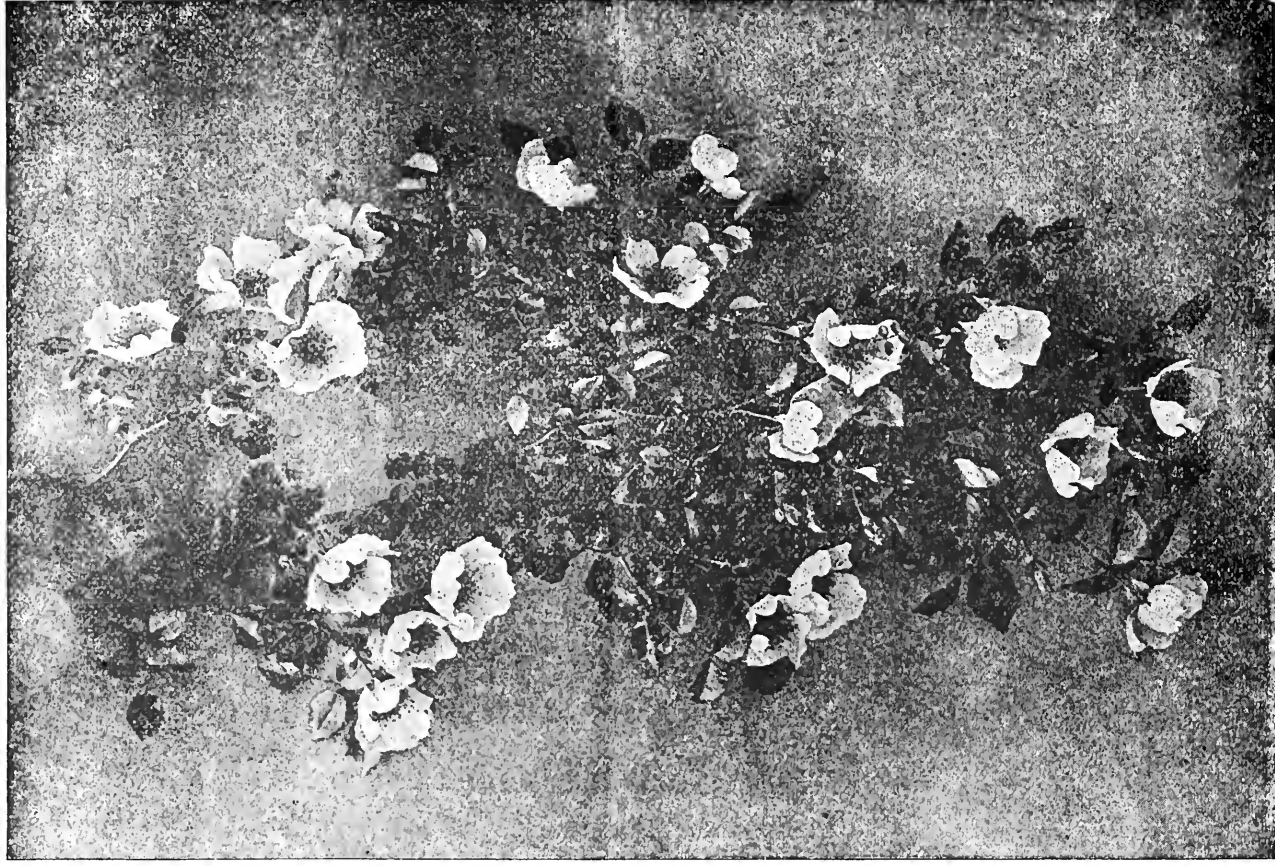


Correspondence invited.

The New Roses and other New and Rare Plants in this Catalogue have been awarded
the only GOLD MEDAL ever given by the New York Florists' Club.



SPRAY OF GARDENIA.



SPRAY OF JERSEY BEAUTY.